



These instructions describe how to properly install the 16" FBI EZ Handlebar Kit for 2021 FLHR and FLHRXS for 16" handlebars. You should review these instructions before installing the product as they contain important information regarding your FBI EZ Install Handlebar Kit. Please keep instructions for future reference.

109516 - 16" Install kit-Chrome-2021 Road King Standard/Special

109516-B - 16" Install kit-Black-2021 Road King Standard/Special

Items included in this kit:

- Turn signal and handlebar control wire extensions
- 6" clutch cable extension
- 25" brakeline extension
- Ropes
- Lube
- Zip ties



109516

WARNING: The rider's safety depends upon the correct installation of this kit. Use the appropriate service manual procedures. If the procedure is not within your capabilities or you do not have the correct tools, contact a dealer to perform the installation. Improper installation of this kit could result in death or serious injury.

Test brakes at low speed. If brakes are not operating properly, testing at high speeds can cause loss of control, which could result in death or serious injury.

1. Cover gas tank and front fender to prevent any damages.
2. Remove headlamp trim ring. Remove the 7 screws that hold head lamp.



3. Remove fork block cover by prying up on the plastic round cover.



4. Remove the pictured nut to take off nacelle trim.



5. Remove the 3 screws that hold down the handlebar clamp cover and remove.



6. Cut zip ties that hold brake and clutch lines on both sides.



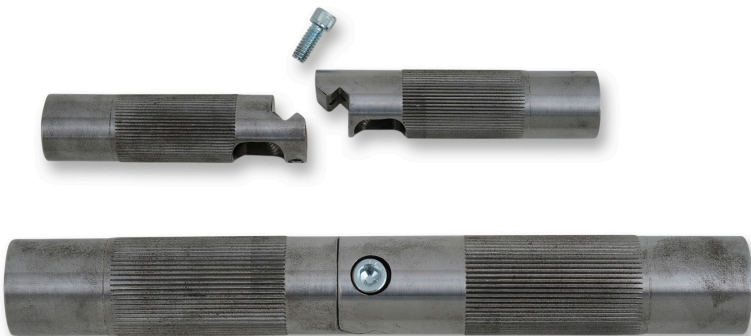
7. Unplug both right hand switch housing plugs.



8. Unplug left hand switch housings and throttle sensor plugs and remove stock handlebars.



9. Install center handlebar bolt. Torque to 10 ft. lbs.



10. Prepare handlebars to install wiring and cables



11. Using supplied ropes and air blower, push 2 ropes through the right FBI handlebar grip tube and bring through center clamp hole. Push 1 rope through left FBI handlebar grip tube and bring through center clamp hole.



12. Tape 1 string out of the right handlebar to the right grip tube and lower clamping area. This will be used later to run throttle wires through handlebar.



13. Installing the original handlebar control wires back into the bars. Start by taping the right control wire at the bottom side of the handlebar next to knurling. Pull right side rope up until wire comes out of grip tube. Then proceed with same procedure for left side.

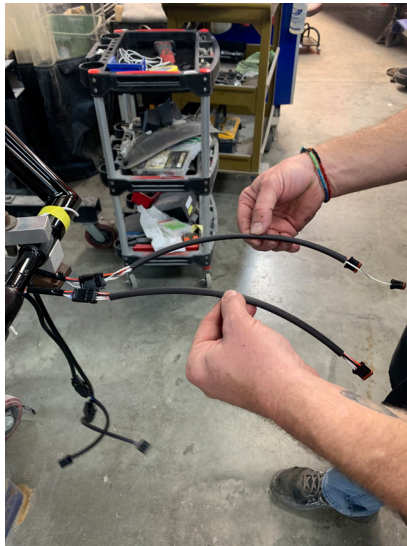


14. Tape left handlebar wires to the string at the clamp area of the left handlebar. Lubricate taped area and pull wires up through handlebar.



15. Pull throttle wires through the right handlebars from the grip tube down through the hole in the clamp area as normal. Note: Make sure control wire is installed first.

16. Install wire extensions and turn signal wire extensions that are provided.



17. Reinstall switch housings and clamp the bars to motorcycle.

18. Remove clutch line from master cylinder and pull out through front of headlamp housing.

19. Remove bleeder fitting from the supplied line and route new line through headlamp housing. Then reattach bleeder fitting.



20. Attach stock clutch line to new bleeder fitting.



21. Pull brake line assembly into headlamp housing and attach to clutch master cylinder. Tighten all fittings.



22. Repeat this process with brake master cylinder and brake line extension.

23. Bleeding process.

Items Needed: 1/4" Hose, Catch Cup, Brake Fluid

1. Open bleeder 1/4 turn and then install hose. Note: The bleeder valve provided is a speed bleeder. It has a spring and a ball inside of it. As you pump the levers, it allows fluid to pass out of the bleeder and reseals itself. No need for a vacuum bleeder.

2. Remove reservoir cap and position master cylinder in a downward position so air does not trap inside the reservoir.

3. Pump handlebar lever 8 to 10 times or until the lines are filled with fluid.

4. Retighten bleeder screw.

5. Apply brake/clutch and check for any leaks.

24. Plug in harness extensions into stock location. Test function of switches and throttle. If working properly, reinstall headlamp and handlebar covers in reverse order.

25. Locate the clutch cable adjuster on the right side of the frame down tube.



26. Remove the cable clips from the frame. They will be reused.



27. Slide the adjuster tube up.



28. Use a straight screwdriver to remove the red clip. Then collapse the adjuster.



29. Rotate the yellow tube, and locate the little tab. Then separate it from the lower cable using the straight screwdriver.



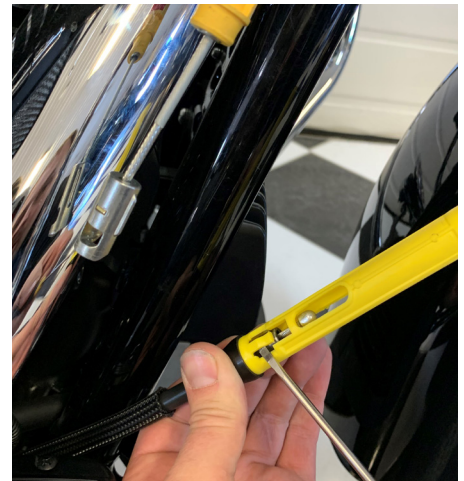
30. Push the wire through from the backside using the screwdriver.



31. The cable is now split, as pictured.



32.. Remove the yellow plastic piece by spreading open the two small tabs on each side.



33. This yellow part will not be reused.



34. Remove the lower portion from the tube extension, and slide it over the stock cable.



35. Use the two wrenches to loosen the adjuster on the wire extension. Slip the wire extension over the wire, hand tighten the nuts, bring the adjuster nut down, then tighten with the wrenches.



36. Slide the tube extension over the wire.



37. Push the upper clutch cable up the frame, and re-install into the new clutch extension tube.



38. Connect the upper cable to the lower cable, through the oval opening in the black tube.



39. Now you can adjust the clutch cable and reinstall the black tube cover.



40. After you slide the cover back on, reinstall the frame clips.

